

1606

主管椅系列

Executive Chair



精于心 · 简于形 · 健康为你

" Sense and Simplicity, for your health "



Product series



model 1606

About Ergonomic chairs

Conception

Ergonomic chair is one chair which serve for various people who has different height and weight ,through operating chair related functions to meets people usage needs under any environment conditions..

Seat feeling

1、 At working, The body waist , back and shoulder perfectly close to the whole chair.

2、 At leisure, The body waist , back and shoulder even the neck perfectly close to the whole chair.

model 1606

2D HEADREST / 2D头枕
头枕的高度和角度调节

HEIGHT ADJUSTABLE BACKREST / 椅背高度调整

MULTI-FUNCTION ADJUSTMENT LUMBAR SUPPORT SYSTEM
多功能腰枕支撑系统可前后和上下调节

3D ARMREST / 3D 扶手
扶手角度、前后和高度调节

SINGLE LEVER CONTROL / 椅子后仰和高度调节

TILT TENSION ADJUSTMENT / 后仰弹力调整



关于产品

About Product>>>>>

产品证书 & Certification

产品材质 & Materials

工艺细节 & Handcraft

功能运用 & Functions

产品展示 & Display

面料色板 & Color card

model 1606

Certification

证书号 第4470229号

外观设计专利证书

外观设计名称: 座椅 (启帆 2)

设计人: 朱建华

专利号: ZL 2017 3 0352723.2

专利申请日: 2017年08月04日

专利权人: 广州品尚汇健康家居有限公司

授权公告日: 2018年01月12日

本外观设计经过本局依照中华人民共和国专利法进行初步审查, 决定授予专利权, 颁发本证书并在专利登记簿上予以登记。专利权自授权公告之日起生效。

本专利的专利权期限为十年, 自申请日起算。专利权人应当依照专利法及其实施细则规定缴纳年费。本专利的年费应当在每年03月04日前缴纳, 未按照规定缴纳年费的, 专利权自应当缴纳年费期满之日起终止。

专利证书记载专利登记时的法律状况。专利权的转移、质押、无效、终止、恢复和专利权人的姓名或名称、国籍、地址变更等事项记载在专利登记簿上。

局长 申长雨

第1页 (共1页)

Test Certificate

Certificate No.: SDHLV18050027FT Date of Issue: Jun.12, 2018

This certificate confirms that the

OFFICE CHAIR (Model No.: JL-1606A)

Supplied by

FOSHAN JIELIAN FURNITURE CO., LTD

Has been tested at SGS-CSTC Standards Technical Services Co., Ltd. Shunde Hardgoods Lab. and successfully satisfied the applicable test requirements from:

ANSI/BIFMA X5.1-2017 (Type I, III)

Report Reference: SDHL1802002850FT

Signed for and on behalf of
Shunde Branch
SGS-CSTC Co., Ltd.

Hary Nie
Approved signatory

Sample tested

This certificate is only valid for the sample(s) supplied and tested at the time, in conjunction with the test data detailed in the report reference. It is not permitted to use SGS logo on product or any other document. Copyright of this certificate is owned by SGS-CSTC Shunde Hardgoods lab, and shall not be reproduced except in full, without written approval of the company. This certificate refers to the General Conditions for Inspection and Testing Services printed.

SGS-CSTC Standards Technical Services Co., Ltd. Shunde Hardgoods Lab.
Building 1 of European Industry Park, No. 1 Shunheran Road, Wusha Section, Dailing Town, Shunde of Foshan, Guangdong Province, China, 523333

Test Certificate

Certificate No.: SDHLV18050016FT Date of Issue: Jun.12, 2018

This certificate confirms that the

OFFICE CHAIR (Model No.: JL-1606A)

Supplied by

FOSHAN JIELIAN FURNITURE CO., LTD

Has been tested at SGS-CSTC Standards Technical Services Co., Ltd. Shunde Hardgoods Lab. and successfully satisfied the applicable test requirements from:

ANSI/BIFMA X5.1-2017 (Type I, III)

Report Reference: SDHL1802002869FT

Signed for and on behalf of
Shunde Branch
SGS-CSTC Co., Ltd.

Hary Nie
Approved signatory

Sample tested

This certificate is only valid for the sample(s) supplied and tested at the time, in conjunction with the test data detailed in the report reference. It is not permitted to use SGS logo on product or any other document. Copyright of this certificate is owned by SGS-CSTC Shunde Hardgoods lab, and shall not be reproduced except in full, without written approval of the company. This certificate refers to the General Conditions for Inspection and Testing Services printed.

SGS-CSTC Standards Technical Services Co., Ltd. Shunde Hardgoods Lab.
Building 1 of European Industry Park, No. 1 Shunheran Road, Wusha Section, Dailing Town, Shunde of Foshan, Guangdong Province, China, 523333

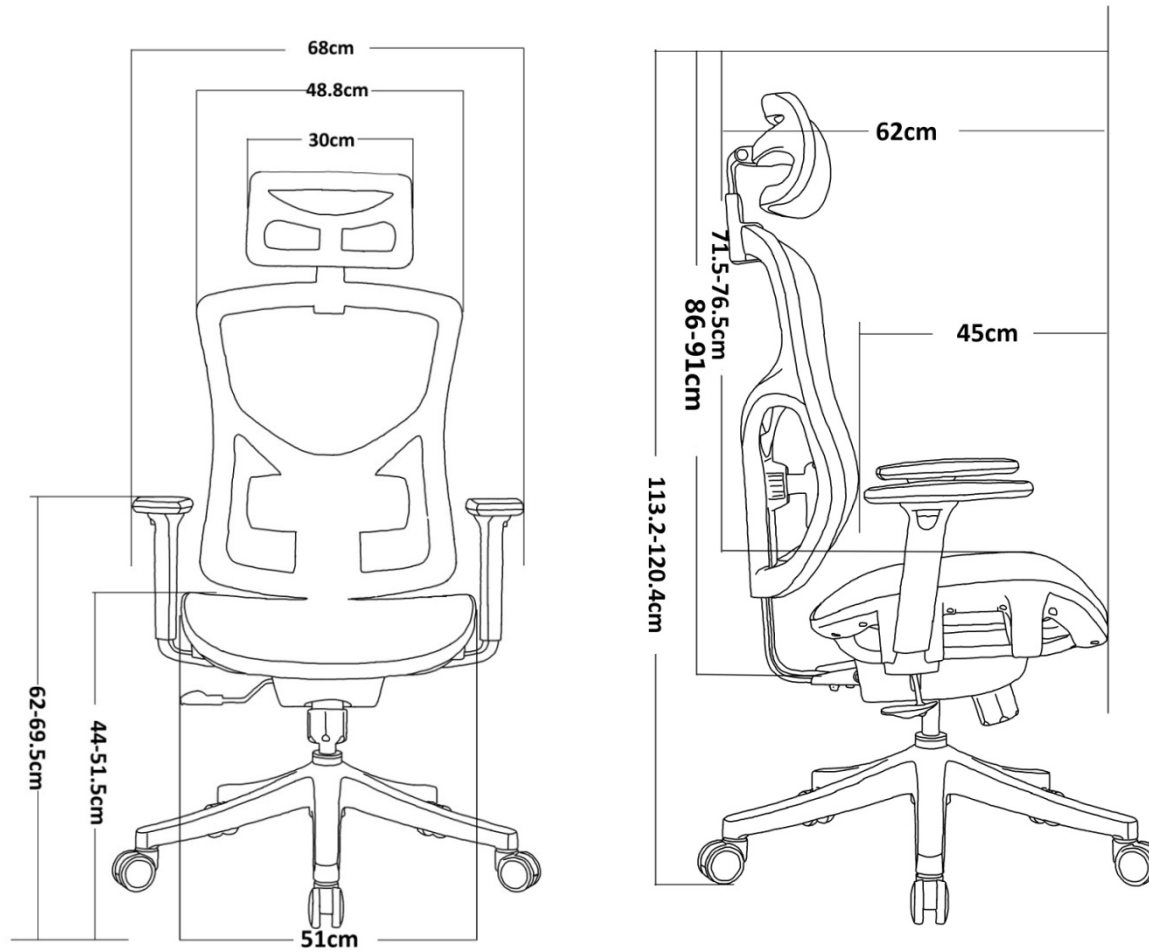


About Materials

1.Frame	Double layer frame
2.Mesh	Imported high elasticity mesh, with anti-proof and Anti-proliferation function ;
3.Plastic	Environmental new nylon material ;
4.Seat front foam	High elasticity fireproof molded foam;
5.Armrest	Patented 3D multi-function armrest, soft PU pad and passed BIFMA test
6. Gas lift	TUV-4 class gas lift, material thickness 2.5mm,High purity nitrogen stuff;
7.Backrest support	"L" shape steel plate;
8.Base	Patented 350mm nylon base, BIFMA confirmed, polished surface;
9.Castors	PU 60mm castors,360° rotating. BIFMA confirmed;
10.Mechanism	Single controller mechanism, functional and modern



Dimension



N/W	20.5kg
G/W	23.5kg
CBM	0.197m3
Carton size	71.5*40*69cm
Packing	1pc/carton
40HQ	330pcs
40GP	291pcs
20GP	138pcs
Guarantee	Five years

model 1606

Handcraft

The real ergonomic office chair,
perfect for covering the chair seat,
back and body waist, back,
shoulders and headrest and neck.



1. Double frames
are high-end
nylon with fiber
material;

2. All mesh was
fixed by gun nails;
(pure material)

3. The seat bases
are reinforced with a
special steel wire
process ;

4. All installation use
semi-automatic
mechanical operation
to ensure the high
quality and
consistency of the
product

model 1606

Functions



1. **Headrest** : Up and down, Angles adjustable;

2. **Backrest** : Height and tilt adjustable;

3. **Lumbar support**: 2D, height and depth adjustable;

4. **Armrest**: 3D adjustable, height, angles, vertical sliding adjustable;

5. **Cushion** : Up and down ;

6. **Mechanism** : Single control mechanism. adjust cushion height , back tilt and angle locked, tilt tension.

7. **Footrest**: Solid alum. support, folded and stretch.

model 1606

Display



model 1606

Display

Mesh back/fabric
seat/leather seat



Full mesh



PU /Genuine
leather



model 1606

Display



model 1606

Material sample

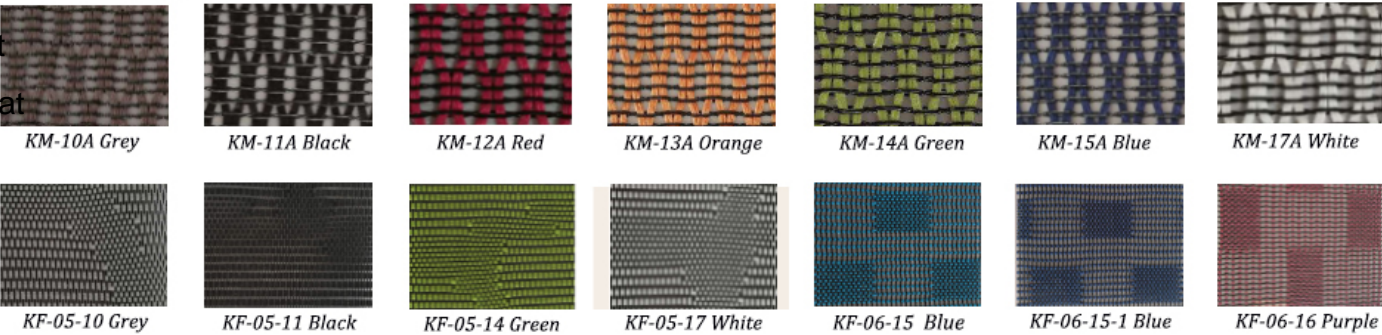
✦ LEATHER 皮样



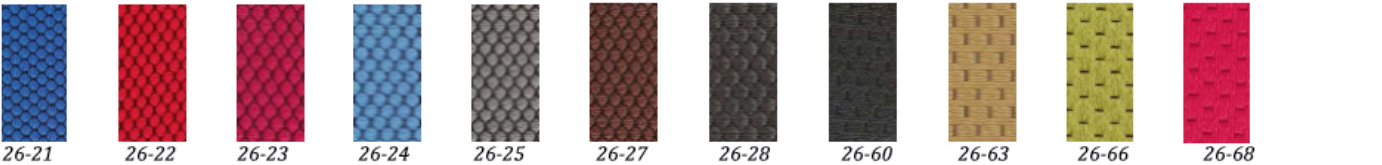
Collocation :

- * Full mesh
- * Mesh back + fabric seat
- * Mesh back + leather seat
- * Full leather

✦ MESH 网样



✦ FABRIC 布样



Finished

THANK YOU



model 1606