

# 1501 职员椅系列

Task Chair



精于心 · 简于形 · 健康为你

" Sense and Simplicity, for your health "



# Product series



model 1501

# About Ergonomic chairs

2D HEADREST / 2D 头枕  
头枕的高度和角度调节

HANGER / 功能衣架

HEIGHT ADJUSTABLE BACKREST / 椅背高度调整

SINGLE-FUNCTION ADJUSTMENT LUMBAR SUPPORT SYSTEM  
独立式腰枕支撑系统可上下调节

3D ARMREST / 3D 扶手  
扶手角度、前后和高度调节

SINGLE LEVER CONTROL / 椅子后仰和高度调节

TILT TENSION ADJUSTMENT / 后仰弹力调整



## Conception

Ergonomic chair is one chair which serve for various people who has different height and weight ,through operating chair related functions to meets people usage needs under any environment conditions.。

## Seat feeling

1、 At working, The body waist , back and shoulder perfectly close to the whole chair.

2、 At leisure, The body waist , back and shoulder even the neck perfectly close to the whole chair.

model 1501

# 关于产品

About Product>>>>>

产品证书 & Certification

产品材质 & Materials

工艺细节 & Handcraft

功能运用 & Functions

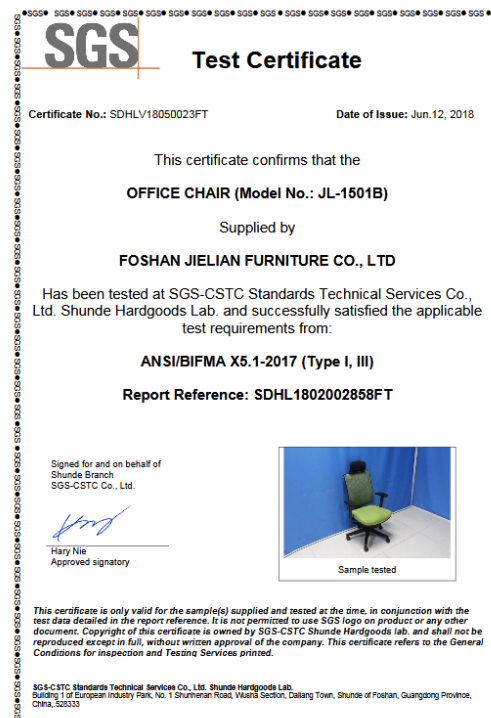
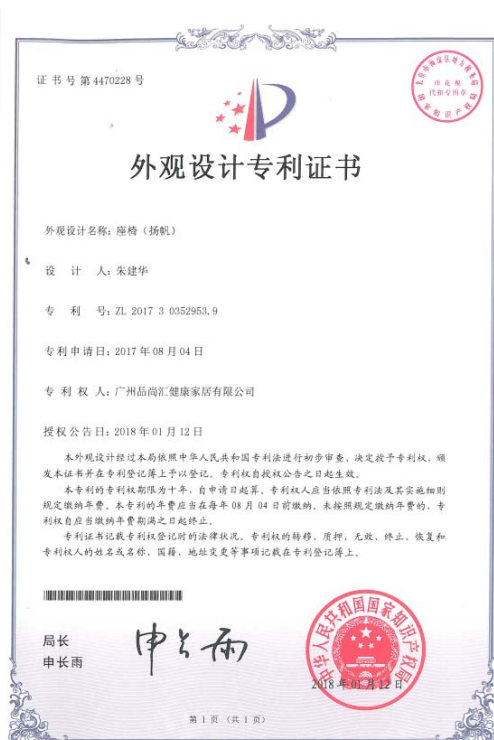
产品展示 & Display

面料色板 & Color card



model 1501

# Certification

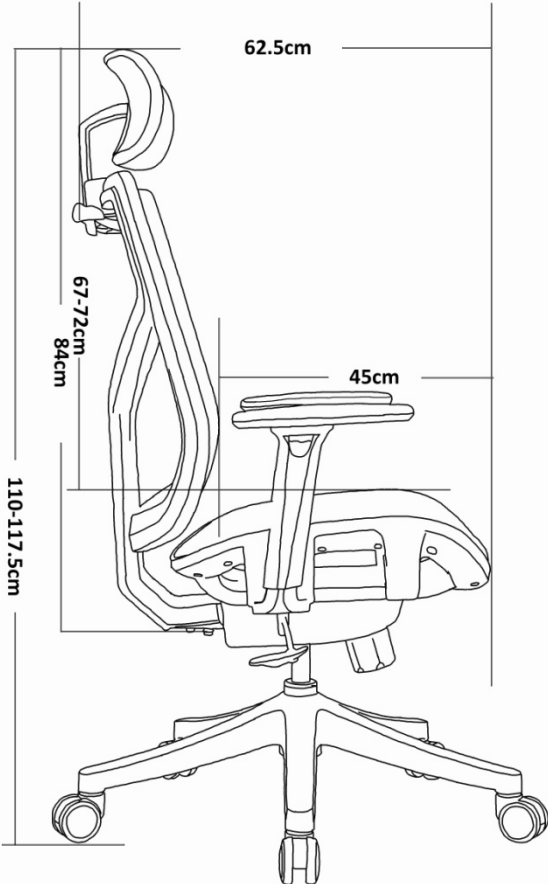
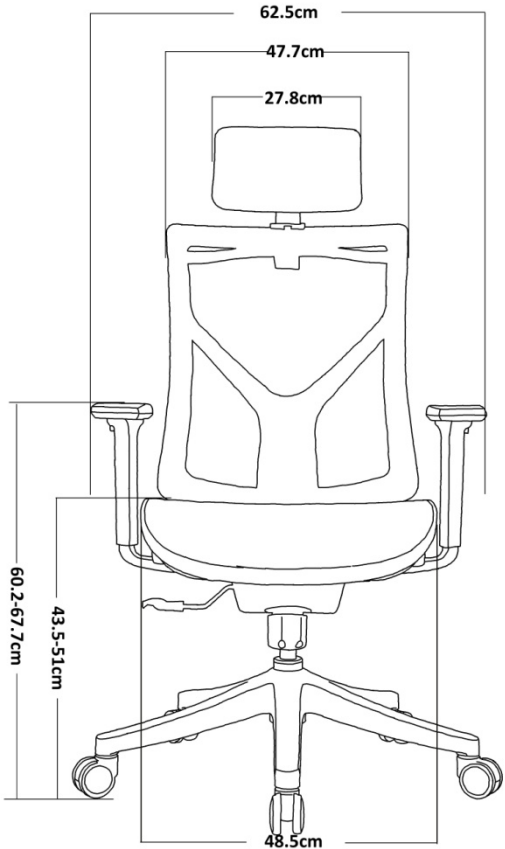


# About Materials

<b>1.Frame</b>	<b>Double layer frame</b>
2.Mesh	Imported high elasticity mesh, with anti-proof and Anti-proliferation function ;
3.Plastic	Environmental new nylon material ;
4.Seat front foam	High elasticity fireproof molded foam;
5.Armrest	Patented 3D multi-function armrest, soft PU pad and passed BIFMA test
6. Gas lift	TUV-4 class gas lift, material thickness 2.5mm,High purity nitrogen stuff;
7.Backrest support	"L" shape steel plate;
8.Base	Patented 350mm nylon base, BIFMA confirmed, polished surface;
9.Castors	PU 60mm castors,360° rotating. BIFMA confirmed;
10.Mechanism	Single controller mechanism, functional and modern



# Dimension



N/W	18kg
G/W	21kg
CBM	0.197m3
Carton size	71.5*40*69cm
Packing	1pc/carton
40HQ	330pcs
40GP	291pcs
20GP	138pcs
Guarantee	Five years

model 1501

# Handcraft



The real ergonomic office chair,  
perfect for covering the chair seat,  
back and body waist, back,  
shoulders and headrest and neck.

1. Double frames  
are high-end  
nylon with fiber  
material;

2. All mesh was  
fixed by gun nails;  
(pure material )

3. The seat bases  
are reinforced with  
a special steel wire  
process ;

4. All installation use  
semi-automatic  
mechanical  
operation to ensure  
the high quality and  
consistency of the  
product

model 1501



# Functions



1. **Headrest** : Up and down, Angles adjustable;

2. **Backrest** : Height and tilt adjustable;

3. **Armrest**: 3D adjustable, height, angles, vertical sliding adjustable;

4. **Cushion** : Up and down ;

5. **Mechanism** : Single control mechanism. adjust cushion height , back tilt and angle locked, tilt tension.

model 1501

# Display



model 1501

# Display



# Display



model 1501

# Display



Working chair project  
1501 model without headrest

model 1501



# Material sample

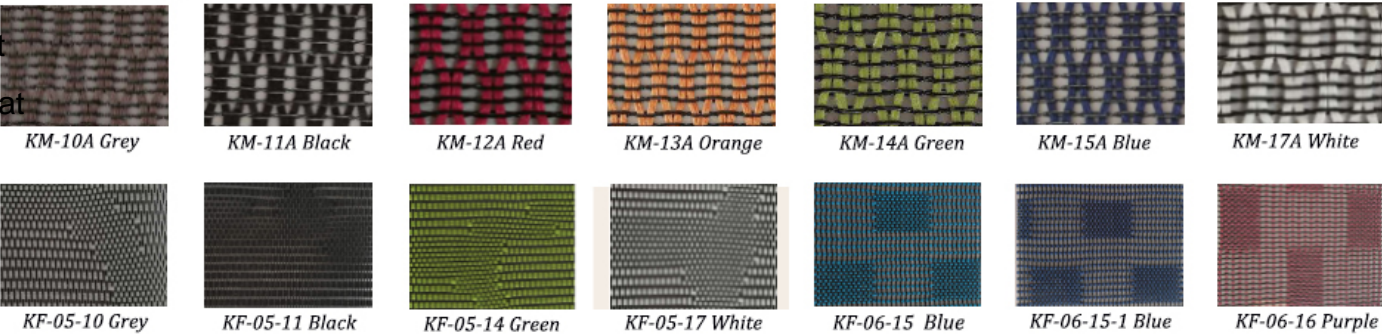
★ LEATHER 皮样



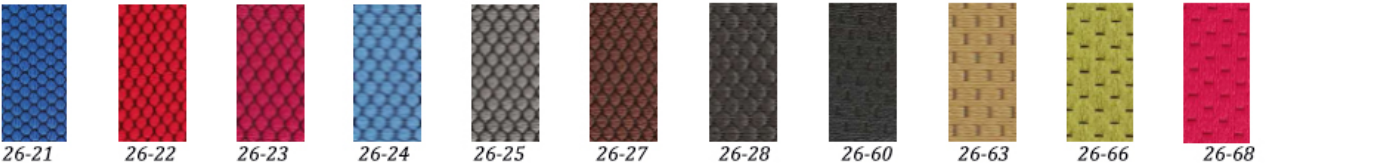
Collocation :

- \* Full mesh
- \* Mesh back + fabric seat
- \* Mesh back + leather seat
- \* Full leather

★ MESH 网样



★ FABRIC 布样



# Finished

# THANK YOU



model 1501